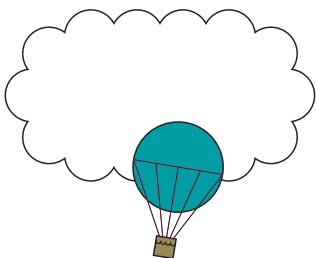


# Cambridge English Key *for Schools*

Brief exam guide



*The key to essential English*

Key English Test (KET) for Schools



**CAMBRIDGE ENGLISH**  
Language Assessment  
Part of the University of Cambridge

## The key to essential English

Cambridge English: Key for Schools is specifically designed to motivate school-aged learners. It shows a student has mastered the basics in English.

## Prove students have the skills to communicate

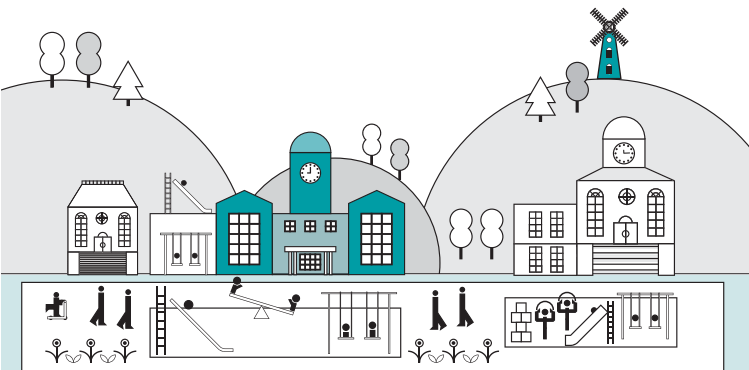
The exam shows students can:

- **understand and use basic phrases and expressions**
- **introduce themselves** and answer basic questions about their personal details
- **interact with English speakers** who talk slowly and clearly
- **write short, simple notes.**

## An internationally accepted certificate

Students receive the same certificate as adults that take the *Cambridge English: Key* exam.

This certificate is accepted by thousands of leading businesses and educational institutions worldwide.



## What level is the exam?

The exam focuses on Level A2 of the Common European Framework of Reference for Languages (CEFR). It shows a student can use everyday English at a basic level.

## What's in the exam?

The exam is designed to be fair to people of all nationalities and linguistic backgrounds and is supported by a dedicated research programme.

It covers all four language skills (Reading, Writing, Listening and Speaking) and knowledge of grammar and vocabulary.

<b>Reading and Writing:</b> 1 hour 10 minutes	Shows a student can understand simple written information and write short messages related to personal information.
<b>Listening:</b> 30 minutes	Shows a student can understand key information in everyday conversations.
<b>Speaking:</b> 8-10 minutes	Shows a student can take part in a conversation. The test is taken face to face with one or two other candidates.

Reading and Writing is worth 50% of the total marks, and each of the other papers is worth 25%.

Download sample papers at

[www.cambridgeenglish.org/keyforschools](http://www.cambridgeenglish.org/keyforschools)



[www.cambridgeenglish.org/  
keyforschools](http://www.cambridgeenglish.org/keyforschools)

Where could this exam take students in the future?



“When you learn a language it's very important that it's structured. The exams offer you a step-by-step approach.”

Patrick Fryzlewicz  
Cambridge English: Key certificate holder  
and trainee doctor

## Show students can communicate in English

- Make learning English fun and motivating for school-aged learners
- Help them develop real-life language skills
- Measure students' progress using international standards
- Help students access the best study, work and life opportunities

**13,000+**  
organisations worldwide trust  
Cambridge English exams

### What's next?

#### Contact your local exam centre

Your local centre can give you details of dates, costs, how to prepare and how to register for an exam.

Find your nearest centre at

[www.cambridgeenglish.org/centres](http://www.cambridgeenglish.org/centres)

#### Get support

Find a wide range of support, including official Cambridge English preparation materials, at

[www.cambridgeenglish.org/keyforschools](http://www.cambridgeenglish.org/keyforschools)

© UCLES 2013 | CE/1007/3Y02



\*1999690128\*



**CAMBRIDGE ENGLISH**  
Language Assessment  
Part of the University of Cambridge

## Contact us

Cambridge English  
Language Assessment  
1 Hills Road  
Cambridge  
CB1 2EU  
United Kingdom

[www.cambridgeenglish.org/help](http://www.cambridgeenglish.org/help)



[www.cambridgeenglish.org/keyforschools](http://www.cambridgeenglish.org/keyforschools)



[facebook.com/CambridgeEnglish](https://facebook.com/CambridgeEnglish)



[twitter.com/CambridgeEng](https://twitter.com/CambridgeEng)



[youtube.com/CambridgeEnglishTV](https://youtube.com/CambridgeEnglishTV)

Cambridge English Language Assessment is part of the University of Cambridge. We develop and produce the most valuable range of qualifications for learners and teachers of English in the world. Over 4 million people take Cambridge English exams each year in 130 countries. More than 13,000 universities, employers, government ministries and other organisations accept our certificates.

Cambridge English Language Assessment – a not-for-profit organisation.



A DIVISION OF  
CAMBRIDGE ASSESSMENT